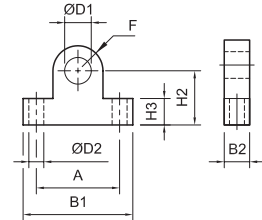


### Soporte lateral para basculante intermedio Acople para horquilla

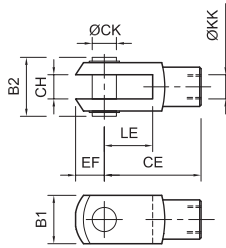
Códigos en **Negrita**: entrega inmediata, salvo ventas.

Ø D1	MiCRO	A	B1	B2	Ø D2	F	H2	H3
10	0.007.000.014	32	42	9,5	5,5	9,5	22	10
12	0.008.000.014	36	48	11,5	6,6	11	25	12
16	0.009.000.014	50	66	15,4	9	15	36	16
20	0.011.000.014	63	83	19,2	11	19	41	20
25	0.013.000.014	75	100	24	16	24	50	25
30	0.014.000.014	90	120	29	18	29	57	30

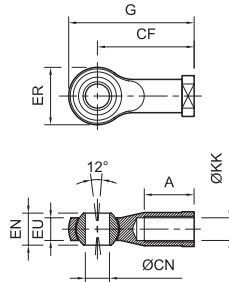
No normalizado



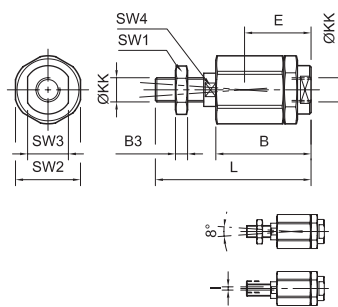
### Horquilla para vástago



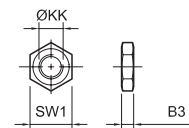
### Horquilla con rótula para vástago



### Rótula para vástago



### Tuerca para vástago



MiCRO	
M10 x 1,25	<b>0.007.000.010</b>
M12 x 1,25	<b>0.008.000.010</b>
M16 x 1,5	<b>0.009.000.010</b>
M20 x 1,5	<b>0.011.000.010</b>
M27 x 2	<b>0.033.000.010</b>
M36 x 2	<b>0.014.000.010</b>
M42 x 2	0.016.000.010
M48 x 2	0.097.000.010

MiCRO	
M10 x 1,25	<b>0.007.000.012</b>
M12 x 1,25	<b>0.008.000.012</b>
M16 x 1,5	<b>0.009.000.012</b>
M20 x 1,5	<b>0.011.000.012</b>
M27 x 2	<b>0.033.000.012</b>
M36 x 2	0.034.000.012

MiCRO	
M10 x 1,25	<b>0.007.000.023</b>
M12 x 1,25	<b>0.008.000.023</b>
M16 x 1,5	<b>0.009.000.023</b>
M20 x 1,5	<b>0.011.000.023</b>
M27 x 2	0.033.000.023
M36 x 2	0.014.000.023

MiCRO	
M10 x 1,25	<b>0.007.000.011</b>
M12 x 1,25	<b>0.008.000.011</b>
M16 x 1,5	<b>0.009.000.011</b>
M20 x 1,5	<b>0.011.000.011</b>
M27 x 2	<b>0.033.000.011</b>
M36 x 2	<b>0.014.000.011</b>
M42 x 2	<b>0.016.000.011</b>
M48 x 2	0.097.000.011

ØKK	A	B	B <sub>1</sub>	B <sub>2</sub>	B <sub>3</sub>	ØCN	CE	CF	CH	ØCK	E	EF	EN	EU	ER	G	I	L	LE	SW <sub>1</sub>	SW <sub>2</sub>	SW <sub>3</sub>	SW <sub>4</sub>
M10 x 1,25	21	46	20	25	5	10	40	43	10	10	31	12	14	10,5	28	57	2	71	20	16	30	19	12
M12 x 1,25	24	46	24	30	6	12	48	50	12	12	32	14	16	12	32	66	2	75	24	18	30	19	12
M16 x 1,5	33	63	32	39	8	16	64	64	16	16	44	19	21	15	42	85	2	103	32	24	41	30	19
M20 x 1,5	40	71	40	48	10	20	80	77	20	20	53	25	25	18	50	102	2	119	40	30	41	30	19
M27 x 2	51	104	55	65	12	30	110	110	30	30	76	38	37	25	70	145	4	170	54	41	-	-	32
M36 x 2	56	122	70	78	18	35	144	125	35	35	93	44	43	-	-	-	4	205	72	50	-	-	32
M42 x 2	-	-	85	-	21	-	168	-	40	40	-	77	-	-	-	-	-	-	84	65	-	-	-